



FORMATION EVALUATION LOG

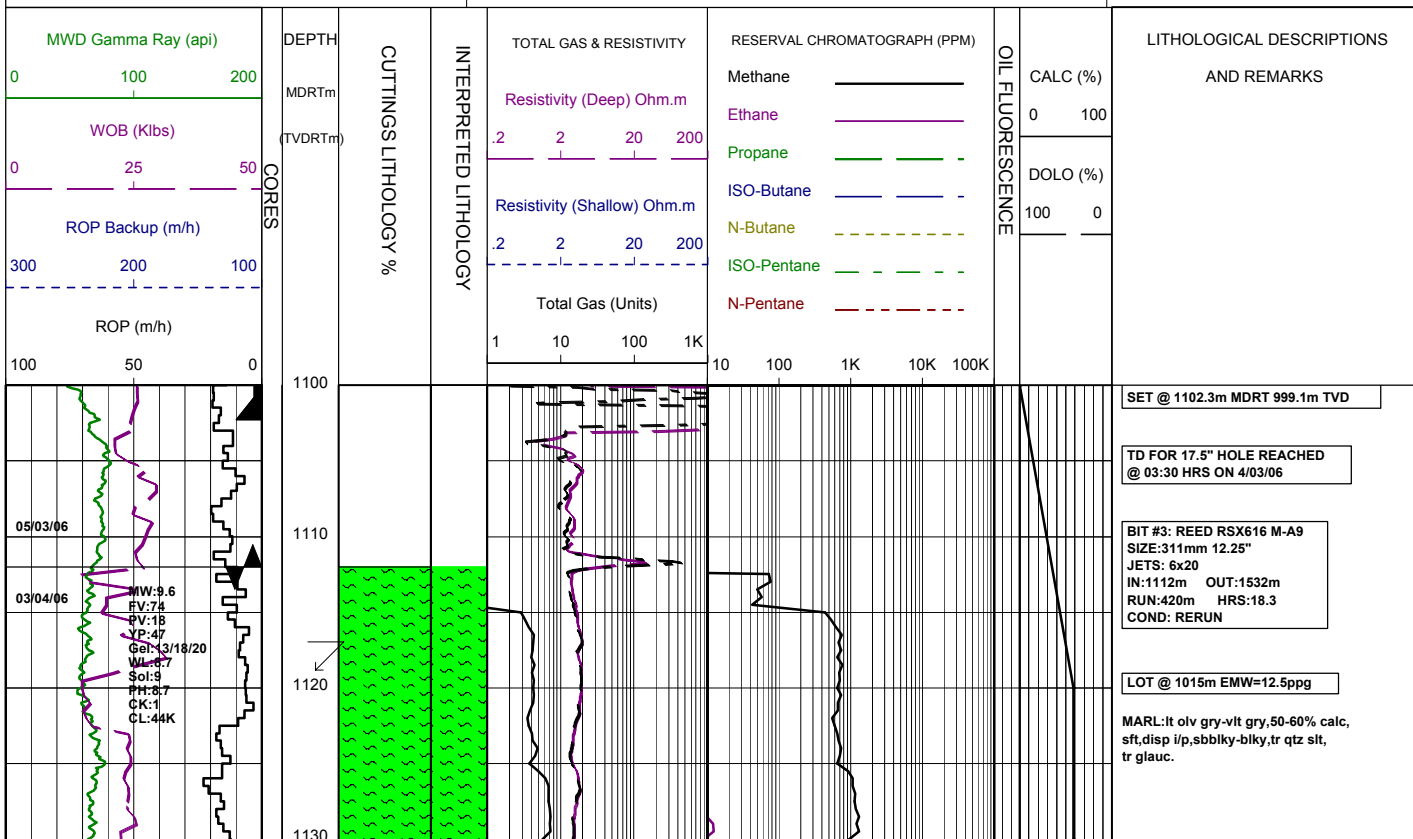


WELL : BASKER3

FROM (m): 1100 TO (m): 2090 SCALE: 1/ 500

Country : AUSTRALIA	Latitude : 38°18'42.44"S	HOLE / CASING INFO 17 1/2" Hole to (mMDRT) : 1112m	Spud Date : 01-03-2006
Basin : GIPPSLAND	Longitude : 148°43'29.78"E	12 1/4" Hole to (mMDRT) : xxxx	Total Depth Date : xx-03-2006
Field : BASKER	UTM Co-ord X (m E) : 650106.2	13 3/8" Shoe at (mMDRT) : xxx.xm	Total Depth (mRT) : xxxx
Permit : VIC/L26	UTM Co-ord Y (m N) : 5761989.6	9 5/8" Shoe at (mMDRT) : xxxx.xm	T.V.D. (mSS MSL) : 3085m
Well Type : DEVELOPMENT	RT-LAT (m) : 21.5		Status : COMPLETED
Rig Name : OCEAN PATRIOT	RT-Seabed (m) : 175.1		

ABBREVIATIONS MW MUD WEIGHT NB NEW BIT FV FUNNEL VISCOSITY RR RERUN BIT PV PLASTIC VISCOSITY CB CORE BIT YP YIELD POINT WOB WEIGHT ON BIT FC FILTER CAKE RPM REVS PER MINUTE SOL SOLIDS FLC FLOW CHECK WL FILTRATE CR CIRCULATE RETURNS SD SAND - % PR POOR RETURNS S SALINITY - PPM NR NO RETURNS RM MUD RESISTIVITY BG BACKGROUND GAS RMF MUD FILTRATE TG TRIP GAS C CARBIDE TEST STG SHORT TRIP GAS LAT LOGGED AFTER TRIP CG CONNECTION GAS DS DEVIATION SURVEY SG SWAB GAS SVG SURVEY GAS		LITHOLOGY LEGEND Claystone Siltstone ar. Silt ar Fine SST Medium SST Coarse SST Marl Clay, Limestone Limestone Dolomite Coal Gypsum Lithic Fragment Foraminifera Fossils Bryozoa Brachiopoda Cement Sponges Glauconite Pyrite Iron Minerals Mica Carb Fragments			ENGINEERING LEGEND Shoe FIT Mud loss Deviation survey DST Mud gain Test Sidewall Core Core RFT	
---	--	--	--	--	---	--



WOB:24 kips
RPM:144-160
SPP:2320-2450 psi
FLW:1000 gpm

WOB:24 kips
RPM:138-170
SPP:2480-2650 psi
FLW:1000-1010 gpm

1140
1150 (1038.4)
1160
1170
1180
1190
1200 (1079.3)
1210
1220
1230
1240
1250 (1118.6)
1260
1270

KCL/PHPA/GLYCOL Mud System

MARL:lt olv gry-vlt gry,50-60% calc, sft-mod hd,sbblky-blky,tr qtz silt,tr carb spk & lam,tr foss,tr glauc.

Survey @ 1148.5m: 34.21° 131.2Az

MARL:lt olv gry-vlt gry,50-60% calc, sft-mod hd,sbblky-blky,tr qtz silt,tr carb spk & lam,tr foss,tr glauc.

Survey @ 1176.4m: 34.82° 130.13Az

MARL:lt olv gry-vlt gry,50-60% calc, sft-mod hd,sbblky-blky,tr qtz silt,tr carb spk & lam,tr foram,tr glauc.

Survey @ 1206.0m: 37.04° 128.6°Az

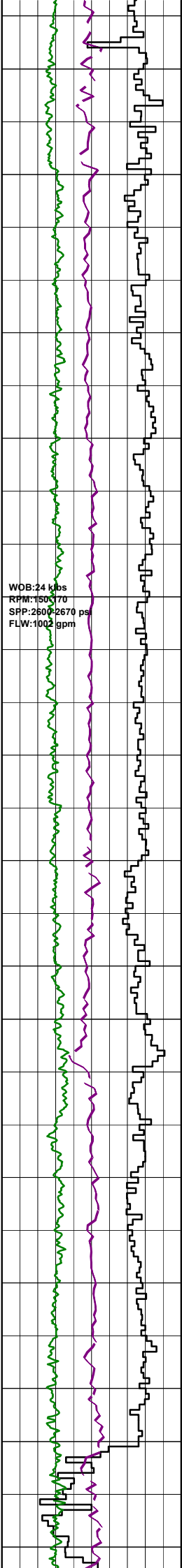
MARL:lt olv gry-v lt gry,50-60% calc,tr qtz silt tr carb spk & lam, vf qtz grn,tr foram,tr glauc,sft-mod hd,sbblky-blky.

Survey @ 1234.4m: 38.52° 128.8Az

MARL:lt olv gry-v lt gry,50-60% calc,yel gry,tr qtz silt,tr carb spk, 5-10% vf qtz grn,tr CLCAR,tr glauc, sft-mod hd,tr hd,blky,occ amor.

Survey @ 1262.9m: 40.82° 128.8Az

MARL:lt olv gry,50-60% calc,tr silt, tr carb spk,tr glauc,tr vf pyr,rr foram, v sft-sft,sbblky-amor.



1280
 1290
 1300 (1156.2)
 1310
 1320
 1330
 1340
 1350 (1192.9)
 1360
 1370
 1380
 1390
 1400 (1229)
 1410
 1420

Survey @ 1291.3m: 42.63° 129.6Az

MARL:lt olv gry,tr olv gry,40-50% calc,tr slit,tr carb spk,tr glauc, tr vf pyr,rr foram,sft-frm,occ mod hd,pred sbbiky.

Survey @ 1320.0m: 42.79° 129.8Az

MARL:lt olv gry,tr olv gry,40-50% calc,tr slit,tr carb spk,tr glauc, tr vf pyr,rr foram,sft-frm,occ mod hd,pred sbbiky.

Survey @ 1348.9m: 42.77° 129.3Az

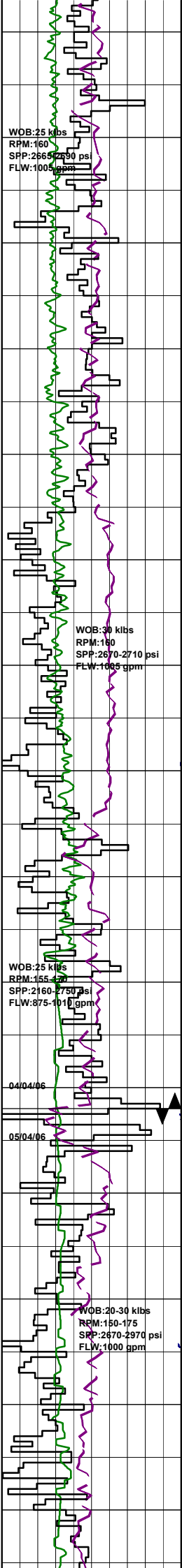
MARL:lt olv gry-olv gry,40-50% calc, tr slit,tr f-med qtz grn,tr glauc, rr CLCAR,tr pyr,tr carb spk,sft-frm, sbbiky,occ amor.

Survey @ 1377.7m: 43.56° 129.6Az

MARL:lt olv gry-olv gry,40-50% calc, tr slit,tr f-med qtz grn,tr glauc,tr pyr,tr carb spk,sft-frm,sbbiky,occ amor.

Survey @ 1406.3m: 45.07° 130.1Az

MARL:lt olv gry-olv gry,40-45% calc, tr slit,tr glauc,tr fg pyr,tr carb spk,sft-frm,sbbiky.



1430
1440
1450 (1264.5)
1460
1470
1480
1490
1500 (1300.4)
1510
1520
1530
1540
1550 (1329.8)
1560
1570

Survey @ 1435.0m: 45.15° 130.1Az

MARL: lt olv gry-olv gry, 40-45% calc, slty, tr glauc, tr vf pyr, tr carb spk, sft frm, com mod hd, sbbiky.

Survey @ 1463.6m: 44.21° 131.6Az

MARL: lt olv gry-olv gry, 40-45% calc, slty, mnv vf aren, tr carb spk, rr pyr lam, frm-mod hd, sbbiky-biky.

Survey @ 1492.3m: 43.35° 131.5Az

MARL: lt olv gry-olv gry, 40-50% calc, slty, mnv vf aren, tr carb spk, rr pyr lam, frm-mod hd, sbbiky-biky.

Survey @ 1520.8m: 43.60° 132.1Az

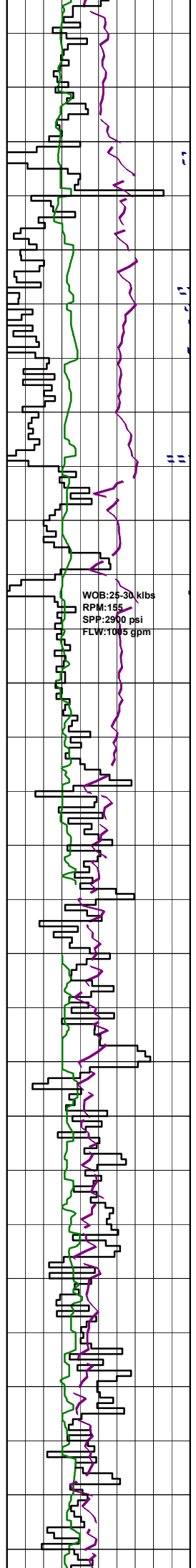
MARL: lt olv gry-olv gry, 40-45% calc, slty, mnv vf aren, tr carb spk, rr pyr lam, frm-mod hd, sbbiky-biky.

BIT #3RR1: REED RSX616 M-A9
SIZE: 311mm 12.25"
JETS: 6x20
IN: 1532m OUT: xxxxm
RUN: xxm HRS: xxx
COND:

MARL: lt olv gry, lt gry-med lt gry, 20-30% calc, slty, tr vf qtz grn, frm-mod hd, rr hd, sbbiky-biky.

Survey @ 1558.1m: 44.32° 131.2Az

MARL: lt olv gry, lt gry-med lt gry, occ calc, slty i/p, tr vf qtz grn, tr pyr, tr glauc, frm-mod hd, sft i/p, rr hd, sbbiky-biky.



1580
1590
1600 (1372.7)
1610
1620
1630
1640
1650 (1408.9)
1660
1670
1680
1690
1700 (1437.4)
1710
1720

WOB: 25-30 klbs
RPM: 155
SPP: 2900 psi
FLW: 1015 gpm

Survey @ 1578.7m: 43.65° 134.2°Az

MARL: it olv gry, lt gry-med lt gry, slty i/p, tr vf qtz grn, tr pyr, tr glauc, frm-mod hd, sft i/p, rr hd, sbbiky-blky.

Survey @ 1607.3m: 43.11° 133.8°Az

MARL: med lt gry-lt olv gry, olv gry, slty, 40-45% calc, tr vf pyr, tr glauc, tr carb spk, sft-frm, occ mod hd, sbbiky-blky.

Survey @ 1635.9m: 43.81° 134.5°Az

MARL: med lt gry-lt olv gry, olv gry, slty, 40-45% calc, tr vf pyr, tr glauc, tr carb spk, sft-frm, occ mod hd, sbbiky-blky.

Survey @ 1664.5m: 44.19° 133.4°Az

MARL: olv gry, slty, 40-45% calc, tr vf pyr, tr glauc, tr carb spk, sft-frm, occ mod hd, sbbiky-blky.

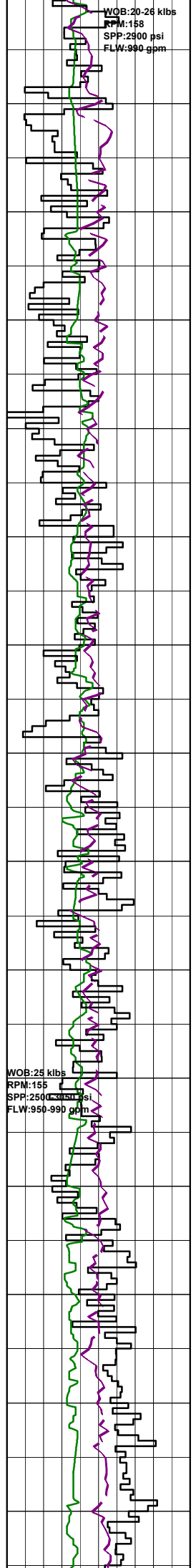
Survey @ 1693.1m: 44.75° 134.1°Az

MARL: olv gry, occ lt olv gry, slty, pred 40-45% calc, tr v calc, tr vf pyr, tr glauc, tr carb spk, sft-frm, occ mod hd, sbbiky-blky.

Survey @ 1721.7m: 44.33° 132.8°Az

WOB:20-26 klbs
RPM:158
SPP:2500 psi
FLW:990 gpm

1730
1740
1750
(1479.7)
1760
1770
1780
1790
1800
(1516.3)
1810
1820
1830
1840
1850
(1552.1)
1860
1870



WOB:25 klbs
RPM:155
SPP:2500 psi
FLW:950-990 gpm

MARL:olv gry,sty,pred 40-45% calc,
tr vf pyr,tr glauc,tr carb spk,
sft frm,occ mod hd,sbbiky-blky

Survey @ 1750.4m: 44.18° 131.7°Az

MARL:olv gry,sty,pred 40-45% calc,
tr vf pyr,tr glauc,tr carb spk,
sft frm,occ mod hd,sbbiky-blky

Survey @ 1779.2m: 44.25° 130.5°Az

MARL:olv gry,sty,pred 40-45% calc,
tr vf pyr,tr glauc,tr carb spk,
sft frm,occ mod hd,sbbiky-blky.

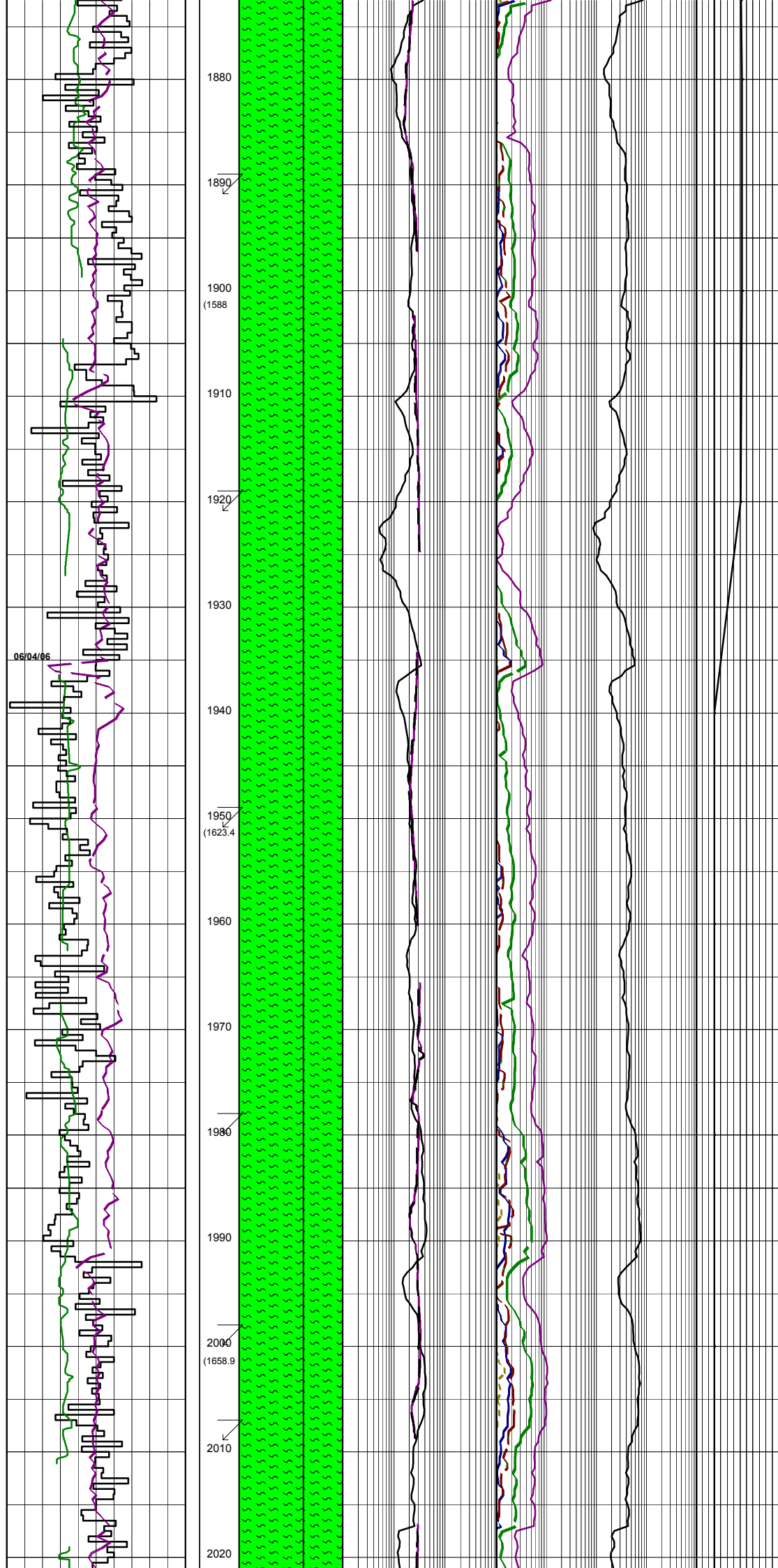
Survey @ 1807.9m: 44.00° 128.9°Az

MARL:olv gry,occ lt olv gry,50%
calc,tr slit,tr vf pyr,tr glauc,
tr foss,tr carb spk,frm-mod hd,
sbbiky-blky.

Survey @ 1836.7m: 44.28° 128.4°Az

MARL:olv gry,40% calc,tr slit,
tr vf pyr,tr glauc,tr foss,tr carb
spk,frm-mod hd,sbbiky-blky.

Survey @ 1865.5m: 44.43° 128.0°Az



MARL:olv gry,40% calc,tr slit,tr
vf pyr,tr glauc,tr foss,tr carb
spk,frm-mod hd,sbbiky-blky.

Survey @ 1891.2m: 44.70° 127.5°Az

MARL:olv gry,40% calc,tr slit,tr
vf pyr,tr glauc,tr foss,tr carb
spk,frm-mod hd,sbbiky-blky.

Survey @ 1922.96m: 44.64° 126.86°Az

MARL:lt-med gry,olv gry,40% calc,tr
slit,tr glauc,tr carb spk & lamn,
frm-mod hd,sbbiky-blky.

Survey @ 1951.17m: 44.88° 127.93°Az

MARL:med gry-med dk gry,olv gry,40%
calc,tr slit,tr glauc,tr carb spk & lamn,
frm-mod hd,sbbiky-blky.

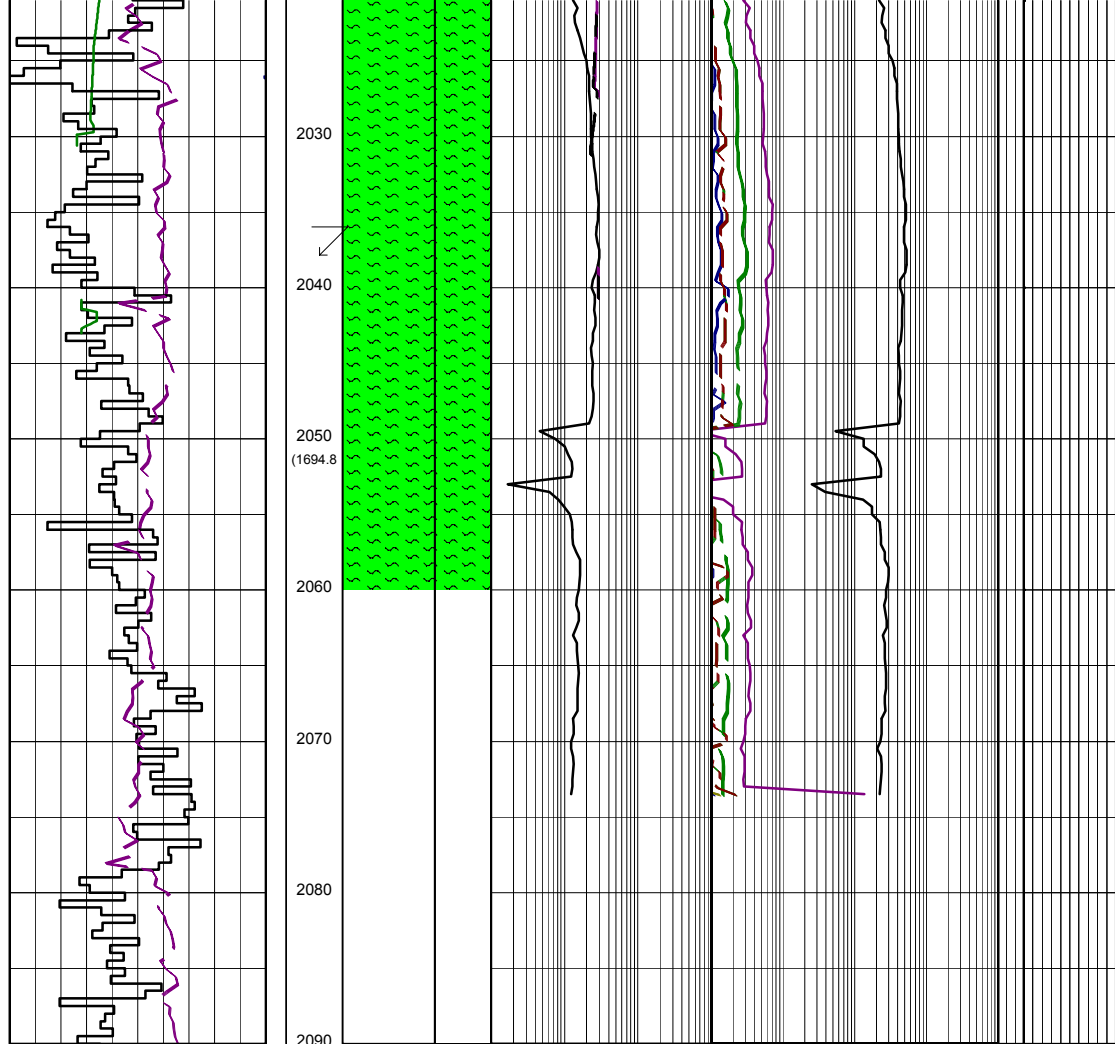
MARL:med gry-med dk gry,olv gry,40%
calc,tr slit,tr glauc,tr carb spk & lamn,
frm-mod hd,sbbiky-blky.

Survey @ 1979.87m: 44.48° 129.57°Az

MARL:med gry-med dk gry,olv gry,40%
calc,tr slit,tr glauc,tr carb spk & lamn,
frm-mod hd,sbbiky-blky.

Survey @ 2008.66m: 44.22° 131.11°Az

MARL:lt gry-med lt gry,olv gry,40%
calc,tr slit,tr glauc,tr carb spk & lamn,
frm-mod hd,sbbiky-blky.



MARL:lt gry-med lt gry,olv gry,40%
calc,tr silt,tr glauc,tr carb spk & lamn,
frm-mod hd,sbblky-blky.

Survey @ 2037.39m: 44.35° 131.62°Az

MARL:lt gry-med lt gry,olv gry,40%
calc,tr silt,tr glauc,tr carb spk & lamn,
frm-mod hd,sbblky-blky.

Survey @ 2066.29m: 44.27° 131.28°Az